



Natalynne Baker, CHW, OCPS
Executive Vice President



DID YOU KNOW?

EVERYDAY 10,000 PEOPLE TURN 65 YEARS OLD

BY 2034, OLDER ADULTS WILL OUTNUMBER CHILDREN IN THE STATE OF OHIO, ACCORDING TO CENSUS BUREAU PROJECTIONS.

SENIORS WILL COMPRISE MORE THAN 80 MILLION U.S. RESIDENTS BY 2040

NATIONAL LOW-INCOME HOUSING COALITION ESTIMATES THAT ON AVERAGE OHIO SENIORS CAN ONLY PAY \$202 A MONTH TOWARD RENT WITHOUT REMOVING SOMETHING FROM THEIR LIVES



OVERVIEW



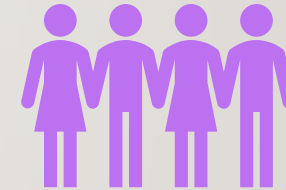
St. Mary Development Corporation's mission is to serve individuals in throughout Ohio and ensure they can live independently with a high quality of life, at a justifiable cost.

THE WORK WE DO



Real Estate Development

Affordable accessible housing primarily through tax credit programs



Supportive Services

Connecting residents to critical services to age in place

REAL ESTATE DEVELOPMENT

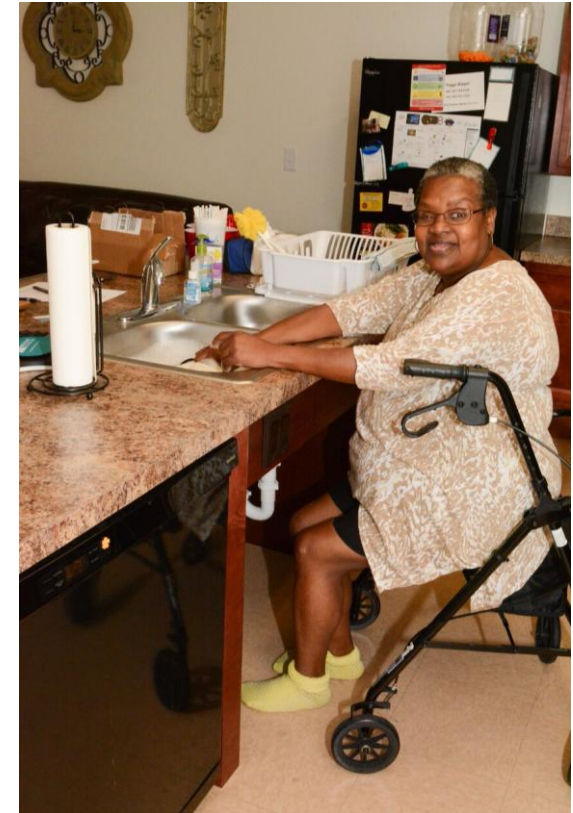


DID YOU KNOW?

MORE THAN 40% OF HOMES ARE NOT ACCESSIBLE YET 2 IN 10 RESIDENTS REPORT HAVING AN ACCESSIBILITY NEED (AHS 2019)

ACCORDING TO THE BIPARTISAN POLICY CENTER, HOUSEHOLDS 80 AND OLDER HAVE A MEDIAN INCOME OF \$25,000 ANNUALLY, AND NEARLY 1 IN 4 HAS AN INCOME OF \$15,000 OR LESS

MORE THAN ONE-THIRD OF ADULTS AGED 45 AND OLDER FEEL LONELY, AND NEARLY ONE-FOURTH OF ADULTS AGED 65 AND OLDER ARE CONSIDERED TO BE SOCIALLY ISOLATED





HOPE BY DESIGN





St. Mary CONNECT

A program of St. Mary Development Corporation

HIGH QUALITY OF LIFE FOR LOW & MODERATE-INCOME SENIORS

Supportive Services is impacting the lives of seniors.

- Supportive Services was added in 2014 and is now offered in 15 senior properties.
- Added a hybrid service coordination model in 2023 at a new 50-unit, for-profit-owned senior apartment community in Trotwood.
- In 2025, we have 9 full-time Service coordinators focused on seniors



ADVOCACY

Telling the story of our residents, debunking myths of affordable housing and advocating for policy that makes sense

- Capital Hill visits
- 8th Annual Business of Aging: Thursday, Oct 2nd
- Local Committee/Board involvement
- Partnerships with other local entities to combine forces and create leverage for non-profits and developers
- *Hope* book



QUESTIONS,
COMMENTS,
CONCERNS?

- For more information or a tour of our properties please contact, Natalynne Baker at nbaker@smdcd.org

937-463-3648

