

Serving Refugees & Immigrants in Ohio:

Who are Ohio's Refugees and Asylees?

Presenter: Karin Blythe, Senior Services Program Manager
Community Refugee & Immigration Services (CRIS)
Columbus, Ohio



1925 E. Dublin-Granville Rd. Suite 102
Columbus, Ohio 43229
Main Office: (614) 235-5747
Web: www.crisohio.org

Karin's direct line: (614) 987-1641
Email: kblythe@cris-ohio.org

FACT SHEET

Refugee Services

Refugees come to the United States for protection from persecution or to find peace, freedom and opportunities for themselves and their families. The Refugee Services Program is designed to integrate refugees into America's economic and social landscape while helping them maintain their cultural heritage.

Refugees need help integrating into American culture as soon as possible. To do this, they need help understanding cultural differences, help interpreting and translating their native language into English, and classes to learn English. They also need help with transportation, child care and employment. The major goal of the Refugee Services Program is to help them find work to support their families and to connect their family with local schools and the community.

Who is a refugee?

A refugee is someone outside his or her country of origin who is unable or unwilling to return to that country. Refugees do not want the protection of their original countries because of persecution or fear of persecution due to their race, religion, nationality, political opinion or membership in a particular social group.

Refugees are designated by the United Nations High Commissioner for Refugees and apply to resettle in the United States through the U.S. Department of Homeland Security. Resettlement into the U.S. is managed by the federal Department of State. People who receive refugee status are allowed to live in the U.S. legally. Those granted asylum, Iraqi and Afghan "Special Immigrants," certain individuals from Cuba and Haiti, certain Amerasians, and certified victims of human trafficking also are eligible for refugee services.

Where do refugees in Ohio come from, and where do they live now?

In 2012, Ohio was home to 2,031 refugees who resettled from 22 countries. The majority were from Bhutan, Iraq, Somalia and Burma. The majority of refugees in Ohio live in five counties: Cuyahoga, Franklin, Hamilton, Montgomery and Summit.

What services are provided?

Refugees may be eligible for the Refugee Cash Assistance and Refugee Medical Assistance programs for the first eight months after they arrive in the country. Depending on who is in the family group, refugees also may be eligible for other federal programs.

Refugees also are eligible for social services programs for up to five years, to help them become self-supporting as quickly as possible. Examples of refugee social services include job and language training, employment counseling, job placement, child care and transportation related to employment, citizenship training and naturalization services.

How can I apply for the program?

Contact your county department of job and family services to determine whether you, your family or someone you know may be eligible for the Refugee Services Program. After an interview, an application will be completed and filed regarding each household's situation. For more information on the Refugee Services Program, call 614-466-4815 or email refugee@jfs.ohio.gov.

DEMOGRAPHIC MAP OF REFUGEE RESETTLEMENT IN OHIO YEAR 2013 (FFY) (October 1, 2012 to September 30, 2013)



RESETTLEMENTS BY COUNTRY OF ORIGIN		
COUNTRY	#	%
BHUTAN	1192	42%
SOMALIA	501	18%
IRAQ	447	16%
BURMA	215	8%
ERITREA	112	4%
DEM. REP. CONGO	106	4%
SUDAN	103	4%
ETHIOPIA	36	1%
BURUNDI	15	1%
Other	87	3%
TOTAL	2814	100%

RESETTLEMENT BY COUNTY			RESETTLEMENT AGENCY
COUNTY	#	%	
FRANKLIN	1296	46%	Community Refugee and Immigration Services, Us Together & World Relief
CUYAHOGA	613	22%	International Services Center, Us Together-Cleveland & Catholic Charities-Cleveland
SUMMIT	478	17%	International Institute of Akron
HAMILTON	203	7%	Catholic Social Services of Southwestern Ohio
MONTGOMERY	177	6%	Catholic Social Services of Miami Valley
BUTLER	31	1%	Catholic Social Services of Southwestern Ohio
LORAIN	4	0%	Catholic Charities-Cleveland
STARK	4	0%	International Institute of Akron
WARREN	4	0%	Catholic Social Services of Southwestern Ohio
GREENE	1	0%	Catholic Social Services of Miami Valley
LAKE	1	0%	Catholic Charities-Cleveland
MEDINA	1	0%	International Institute of Akron
PORTAGE	1	0%	International Institute of Akron
TOTAL	2814	100%	9 Resettlement Agencies

INDIVIDUALS RESETTLED BY AGE	
AGE	%
0-4	10%
5-19	30%
20-29	23%
30-39	16%
40-49	10%
50-59	5%
60-69	3%
70-99	2%
TOTAL	100%

LEGEND	
	600 and over
	400 to 499
	200 to 399
	100 to 199
	5 to 99
	3 to 4
	1 to 2

Individuals Resettled in Ohio by Country of Origin FFY 1983 - 2013													
2004 - 2013 INDIVIDUALS RESETTLED IN OHIO											SUMMARY		
COUNTRY	2004	2005	2006	2007	2008	2009	2010	2011	2012	2013	2004-2013	1983-2003	Total 1983-2013
Afghanistan	5	1	7	16			3	16		11	59	113	172
Albania											0	26	26
Armenia											0	8	8
Azerbaijan			3	1							4	10	14
Bangladesh										1	1	0	1
Belarus	8	23	5								36	54	90
Bhutan					264	509	631	767	1,307	1,192	4,670	0	4,670
Bosnia & Herz.	14	10									24	34	58
Burma	41	36	66	293	328	268	246	296	209	215	1,998	468	2,466
Burundi	8		11	106	182	8	41	4	17	15	392	26	418
Cambodia				4							4	0	4
Central African Rep.								6	5		11	0	11
Chad				2			1				3	0	3
Colombia	10		2						17	10	39	0	39
Congo		4			1	6			7	10	28	0	28
Croatia	10	4									14	25	39
Cuba	7	2	40	4		9	4	11			77	90	167
Czechoslovakia											0	115	115
Dem.Rep.Congo	10	7	2	11	28	24	56	39	68	106	351	0	351
Djibouti	4										4	1	5
Ecuador										3	3	0	3
Egypt					1						1	0	1
Eritrea	9	3	12	25	2	34	44	97	69	112	407	6	413
Ethiopia	90	16	41	80	8	4	5	27	36	36	343	648	991
France											0	1	1
Georgia						2		6		1	9	18	27
Guinea							6				6	0	6
Haiti											0	49	49
Hungary											0	187	187
India										4	4	0	4
Iran	15	7	11	22	10	18	9	9	11	7	119	262	381
Iraq				14	202	358	430	179	271	447	1,901	506	2,407
Ivory Coast								1	1	1	3	0	3
Jordan						2	5		1	1	9	2	11
Kazakhstan		4	4				1				9	0	9
Kyrgyzstan		21									21	0	21
Laos	30	14									44	1,398	1,442
Latvia	5										5	0	5
Lebanon						2	2				4	0	4
Liberia	137	132	38	23	8	19					357	169	526
Macedonia											0	1	1
Mauritania							14				14	0	14
Moldova	5				2	2				2	11	8	19
Nepal							1	2	2	13	18	0	18
Pakistan							1	1	1		3	0	3
Palestine							43	5	1		49	0	49
Poland											0	228	228
Romania											0	980	980
Russia	11	125	48	25	6	24	3	1	2		245	13,063	13,308
Rwanda	12		12	10	14		23	17	3	12	103	57	160
Serbia	12										12	118	130
Sierra Leone	65	81	10				1				157	132	289
Somalia	823	961	1,487	851	201	231	318	139	200	501	5,712	1,279	6,991
Sri Lanka							1				1	0	1
Sudan	46	17	13	19	27	17	24	42	42	103	350	150	500
Syria							2				2	0	2
Tanzania				1							1	0	1
Turkey							2				2	0	2
Ukraine	47	70	44	59	30	27	23	15	21	5	341	131	472
Uzbekistan	9	5	42	11	15	2	22	8	10	5	129	6	135
Vietnam	10	6	63	4	25	17	22				147	3,335	3,482
Yemen							3				3	0	3
Yugoslavia											0	3,427	3,427
Zimbabwe										1	1	0	1
TOTAL	1,443	1,549	1,961	1,581	1,354	1,583	1,987	1,688	2,301	2,814	18,261	27,131	45,392

Ohio Refugee Resettlement Agencies

CUYAHOGA COUNTY

US Together, Inc.
Helen Tarkhanova
Refugee and Immigrant Services Coordinator
2490 Lee Boulevard, Suite 200
Cleveland Hts., OH 44118
P: 216-450-5093
F: 216-450-5098
htarkhanova@ustogether.us
www.ustogether.us

Catholic Charities Migration and Refugee Services

Tom Mrosko, Director
7800 Detroit Avenue
Cleveland, Ohio 44102
P: 216-281-7005
F: 216-939-3890
txmrosko@clevelandcatholiccharities.org
www.clevelandcatholiccharities.org

International Services Center

Karin Wishner, Executive Director
1859 Prospect Avenue
Cleveland, Ohio 44115
P: 216-781-4560
F: 216-781-4565
kwishner@isc-cle.org
www.isc-cle.org

SUMMIT COUNTY

International Institute of Akron

Elaine Woloshyn
Refugee Resettlement Director
207 East Tallmadge Avenue
Akron, Ohio 44310-3298
P: 330-376-5106
F: 330-376-0133
Elaine.woloshyn@iiakron.org
www.iiakron.org

Lucas COUNTY

US Together, Inc.
Corine Dehabey
Resettlement Specialist
2629 Alisdale Dr, Suite 204
Toledo, Ohio 43606
P: 419-469-2529
F: 419-386-1535
cdehabey@ustogether.us

FRANKLIN COUNTY

Community Refugee & Immigration Services (CRIS)

Angela Plummer, Director
1925 E. Dublin-Granville Rd Ste 102
Columbus, Ohio 43229
P: 614-235-5747
F: 614-235-6127
aplummer@cris-ohio.com
www.crise-ohio.org

US Together, Inc.

Nadia Kasvin, Resettlement Coordinator
2021 E. Dublin-Granville Rd., Suite 190
Columbus, Ohio 43229-3568
P: 614-437-9941
F: 614-737-3487
nkasvin@ustogether.us
www.ustogether.us

World Relief

Kay Lipovsky
4664 Cleveland Avenue
Columbus, Ohio 43231
P: 614-337-2448
F: 614-337-2449
klipovsky@wr.org
www.worldrelief.org

HAMILTON COUNTY

Catholic Charities of Southwestern Ohio

Alisa Berry, Director
100 East 8th Street
Cincinnati, Ohio 45202
P: 513-241-7745
F: 513-241-4333
aberry@ccswoh.org
www.ccswoh.org

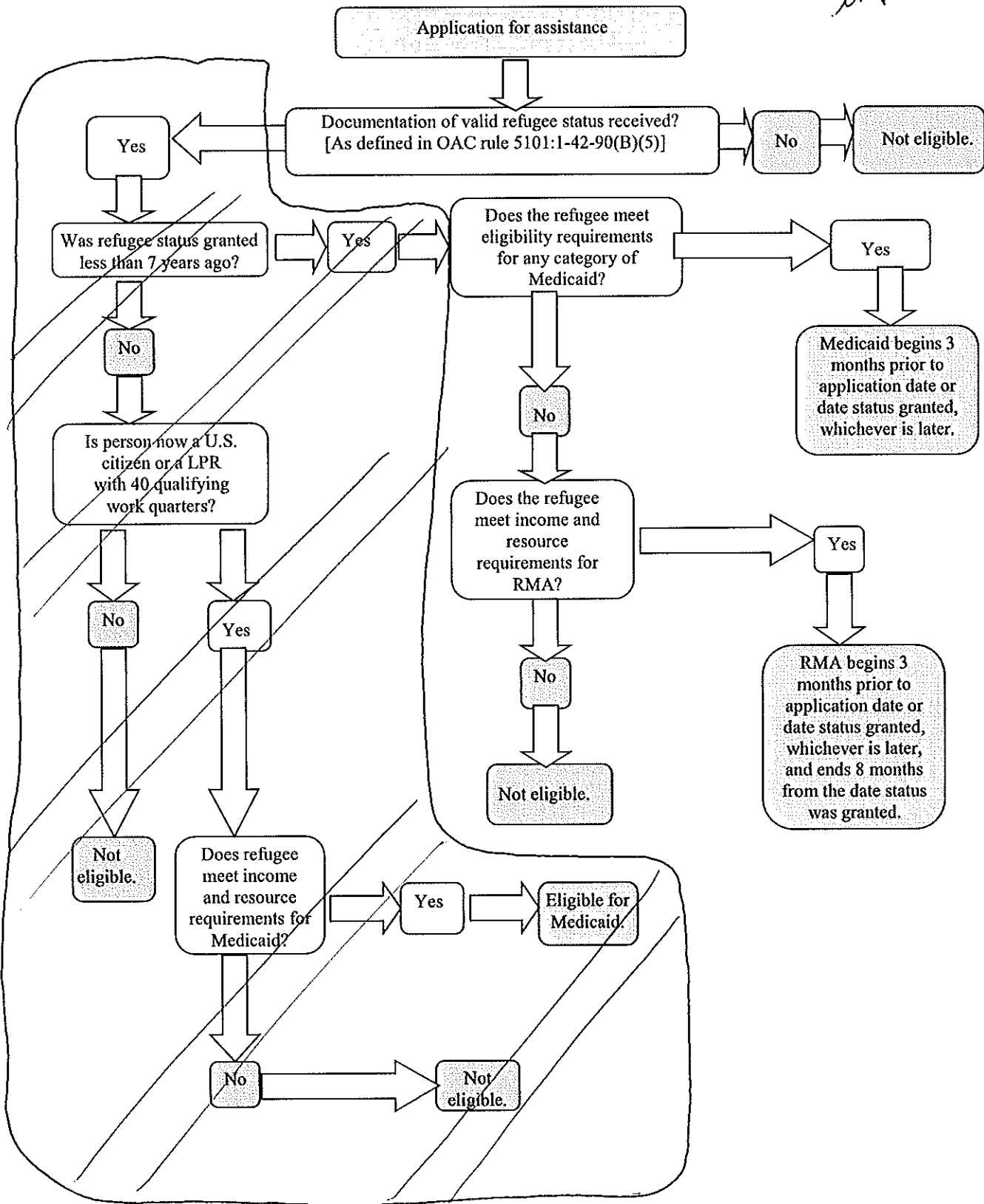
MONTGOMERY COUNTY

Catholic Social Services of the Miami Valley

Dorothy Balsler
1406 Brown St
Dayton, Ohio 45409
P: 937-223-7217
F: 937-222-6750
balserd@cssmv.org
www.cssmv.org

Medical Assistance for Refugees

New Medicaid expansion!



Helpful Information for Working with Refugees

ODJFS Benefits for Refugees

- Refugees are eligible for public benefits to the same extent as U.S. citizens for a limited time period; refugees must meet the same income requirements as U.S. citizens, but they do not have to meet the same 40-quarter requirement.
- When refugees adjust to Lawful Permanent Resident status (after one year in the U.S.), they are still considered refugees for benefits eligibility purposes
- JFS can authorize cash, medical, and food assistance for refugees prior to their receipt of a Social Security number.
- All older refugees should be encouraged and assisted in applying for SSI benefits, as they are eligible for this service until they have been in the U.S. for 7 years (this can be extended if the refugee chooses to apply for and acquires U.S. citizenship).
- Medicaid expansions in 2014 included a new clause relevant to refugee adults. It is now possible for all refugees to acquire and keep Medicaid as long as they remain within the financial eligibility for this option. There is no longer a 7-year cutoff for those who came to the U.S. as refugees. Additionally, refugees do not have to acquire U.S. citizenship in order to keep this benefit.

Older Adult Refugee Trends and Common Barriers

- Not reaching English language fluency (including illiteracy)
- Unable or not interested in working (part time or full time)
- Medical complications & lack of understanding medical system
- Reliance on family or community & collectivistic cultures
- No reliable transportation
- Limited social opportunities
- Increasing cultural & language gap between seniors and grandchildren
- *Resulting in a highly vulnerable population: seniors, 85+ are most likely age group to commit suicide and Bhutanese seniors & teens, specifically struggle with suicide.*

Building Respect & Rapport

- Don't assume that if you're knowledgeable about the culture that you're knowledgeable about the individual.
- Be sure to pronounce names correctly and ask the person what he/she prefers to be called.
- Be aware of the cultural meaning of body language – smiling, nodding, eye contact, touching, foot movement, and other facial expressions.
- Be aware of the differences in preferences for physical space, and perhaps gender limitations/preferences.
- Schedule longer appointments, taking time to include interpretation.
- DO ask the person if they want their family included in the conversation.
- DO discuss confidentiality in SPECIFICS. Not every country practices confidentiality, or adheres to the laws in place.
- DO make sure you address IMMIGRATION STATUS in confidentiality.
- Don't use idioms, abstractions, or metaphors.
- Be curious, ask what it means if you aren't sure!

Healing Methods

- Alternative Medical systems: Ayurveda, homeopathy, naturopathy, acupuncture, cupping and coining
- Mind-Body Interventions: medications, hypnosis, dance/music/art therapy, prayer, and mental healing (i.e. shamanism)
- Biologically-Based Therapies: herbal therapy, Atkins/Ornish/Pritkins diet, and vitamins
- Manipulative/Body-Based Methods: osteopathic manipulations, chiropractic, and massage therapy
- Energy Therapy: qi gong, reiki, therapeutic touch, and magnets

Healing Methods in some countries

- Bhutan: Traditional healers, temples, mass worship (2 major festivals each year), yoga, religious ceremonies (with priests, chanting, burning of incense)
- Eritrea/Ethiopia: spiritual waters in home country, blessed holy water
- Somalia: reading the Koran, praying at the Mosque, imam “priest” can be requested to pray for a person
- Iraq: prayer